



HAPPENINGS

JUNE 2025



THE FUTURE OF THA

At THA Consulting, Inc. (THA), we believe the future isn't something that just happens — it's something we build together.

As we look ahead, we remain deeply committed to shaping the future of mobility, infrastructure, and community development. We continue to approach every project with thoughtful planning, innovative design, and a deep respect for the partnerships that make our work meaningful. While parking remains at the core of what we do, it's never just about structures, it's about creating places that bring people together and support long-term growth in our cities and on our campuses.

As we move into 2025 and beyond, we're embracing new challenges and opportunities. As part of this growth, we've taken a closer look at our core values, refining, and realigning them to reflect both who we are and who we aspire to be. These updated values reinforce what has always mattered most to us: integrity, technical excellence, innovation, and a people-first mindset that drives everything we do.

We're proud of how far we've come — and even more excited for what's ahead. To our clients, partners, and team members: thank you for your trust, your collaboration, and belief in what we're building together.

OUR CORE VALUES

Commitment to Excellence

We go the extra mile for clients, employees, and colleagues, driven by our commitment to excellence.

Responsiveness

We commit to informing and responding promptly.

Efficiency and Effectiveness

We strategically manage priorities to efficiently achieve client and company goals.

Collaboration

We commit to continuously evolve as a team by seeking to learn, improve, and encourage each other.

Quality and Creativity

We foster open, collaborative environments that ensure quality and ignite the creativity essential for innovation.

Transparency

We practice open and transparent communication, grounded in honesty, active listening, and genuine understanding.

STAFF ANNOUNCEMENTS

THA is excited to share news of our firm's growth.
Over the past year, we've welcomed new colleagues and interns.
THA is thankful for the hard work and dedication of all our employees.



ADVANCEMENTS



Jennifer Crowley
Proposal Manager

Jennifer joined THA in 2021 and has quickly become an integral part of the firm's growth and business development efforts. As Proposal Manager, she oversees the strategy, coordination, and production of proposals that showcase the firm's capabilities and expertise. Her attention to detail, collaborative approach, and strong communication skills help ensure THA will deliver impactful, client-focused solutions.

NEW HIRES



Simon Taveras
Project Designer

Office: Philadelphia, PA
"I am enthusiastic about the opportunity to expand my experience into a new industry and apply my skills to make meaningful contributions to the company."



Michael Lester
Project Engineer

Office: Philadelphia, PA
"I'm passionate about enhancing efficiency and fostering innovation within structural engineering! Finding new ways to tackle complex problems is what drives me, and assisting the future generations to be able to do the same!"



Carolina Richardson
Project Designer

Office: Miami, FL
"What drew me to this company is some of the exciting projects THA has been part of and is currently building, in the prime areas of southern Florida like the Design District, as well as being able to design and manage your own projects.
I can't wait to be a part of it."

INTERNSHIPS



Mamadou Silimana
Engineering Intern

Hometown: Philadelphia, PA
School: Temple University
Year: Senior
Major: Civil Engineering



Clement Cataisson
Parking Studies Intern

Hometown: Bethesda, MD
School: Rutgers University
Year: 2nd Year Graduate Student
Major: Master's in City & Regional Planning



Isabel Grajeda
Marketing Intern

Hometown: Boston, MA
School: Temple University
Year: Senior
Major: Marketing



Bridget Handley
Design Intern

Hometown: Langhorne, PA
School: Penn State University
Year: Senior
Major: Architecture



FEATURED PROJECT

AUGUSTA UNIVERSITY 15TH STREET PARKING GARAGE

AUGUSTA, GA

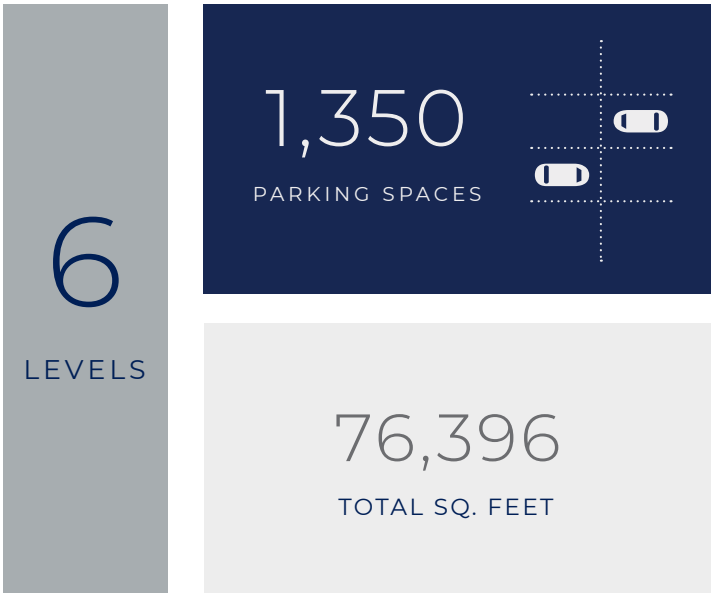
RIBBON CUTTING



AUGUSTA UNIVERSITY - 15TH STREET PARKING GARAGE AUGUSTA, GA

In February 2025, the design-build team celebrated the parking deck's completion at the ribbon cutting, an exciting event to acknowledge this vital new resource for the Augusta University (AU). This parking structure was finished two months ahead of the initial schedule, providing an essential resource to the campus sooner than expected. Gathering with our collaborators and university representatives, we enjoyed commemorating the work together and catching up in the festive atmosphere.

Students will benefit from the convenience of this parking structure, which will shorten commutes by reducing the time spent searching for parking and eliminating long walks from distant lots. This improved access will help them arrive to class on time and engage more fully in campus life. The structure also supports AU enrollment goals by enhancing the infrastructure needed to attract and retain a growing student body. It serves as both a practical asset and a symbolic foundation for continued campus growth.



THA collaborated with Gilbane Building Company and Cooper Carry & Associates, Inc. to design a new parking structure at AU, addressing increased demand resulting from the university's growing student population. Providing a 50% increase in parking capacity, this structure is strategically located to alleviate the university overflow that causes parking congestion in the surrounding neighborhoods. Within days of completion, the deck is over 90% full, demonstrating its immediate utility and high demand. It has successfully absorbed parking overflow, enhanced campus mobility, and reduced neighborhood congestion. The City of Augusta has struggled with students parking on nearby residential streets, impacting locals' convenient access to their own homes. By greatly increasing the university's available parking capacity, the deck will benefit both the campus and the local community.

The parking garage features a thin-brick façade and overhanging roofs on the stair towers, allowing the structure to integrate seamlessly with the surrounding campus architecture. To align with the university's design aesthetic, the stair towers incorporate curtain wall glazing that not only maximizes natural light but also improves safety and visibility. The large glass panels required intricate framing to support their size and ensure structural integrity. To enhance air circulation and keep the stair towers cool in the hot climate, louvers were installed in the curtain walls.



"This parking deck is something our students, faculty and staff have been waiting a long time for. We are beneficiaries of support from our local community and our state. Augusta University is growing, and it's a worthy investment..." "...The message for our community is thank you for continuing to invest in us. This is just another example of the progress we're making at Augusta University and in our community to make lives and livelihoods better for all of our citizens in Georgia." - AU President, Russell T. Keen

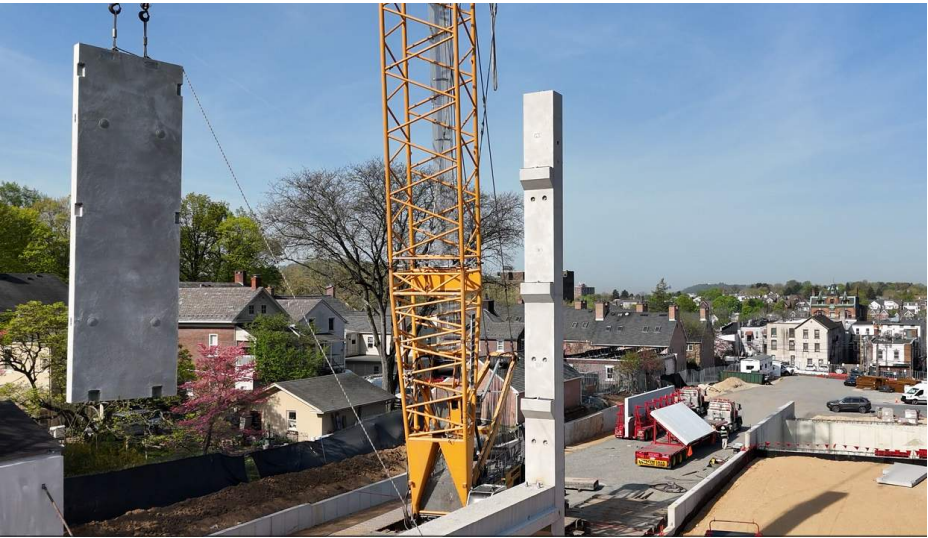
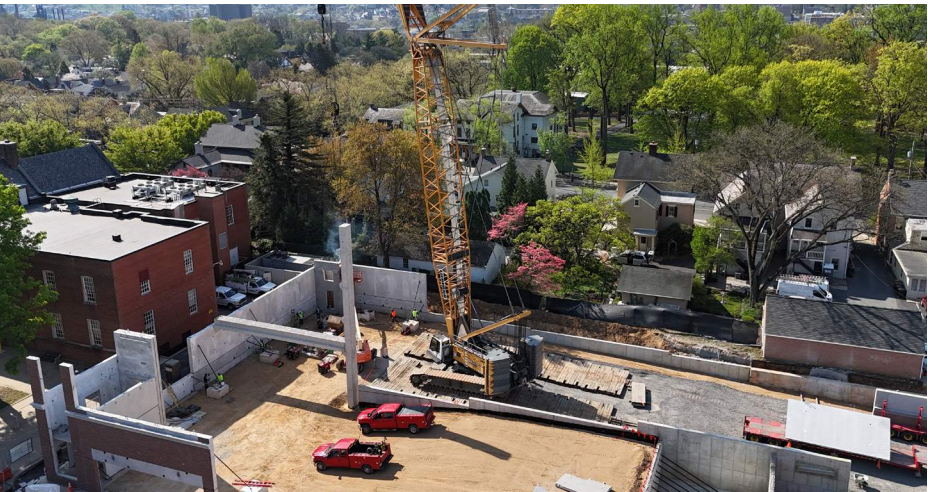


PROJECT ON THE WAY

BETHLEHEM PARKING AUTHORITY
WALNUT STREET PARKING GARAGE
BETHLEHEM , PA

The Bethlehem Parking Authority is spearheading the redevelopment of the Walnut Street Parking Garage in Bethlehem, PA, with THA Consulting serving as the prime consultant. The project began with the demolition of the aging structure and is now progressing toward a modern, purpose-built facility designed to meet the city's growing needs. THA is providing full architectural and engineering design services, along with bid support and construction administration.

Located in the heart of the historic district and adjacent to a vibrant retail corridor, the new garage recently reached a major milestone with the installation of precast concrete elements. Once completed, the structure will enhance downtown accessibility, support local businesses, and help revitalize a vital part of Bethlehem's urban core.



PROJECTS ON THE WAY

TACOMA GENERAL HOSPITAL VISITOR & STAFF PARKING GARAGES
TACOMA, WA



THA provided comprehensive design and consulting services for two new parking decks at Tacoma General Hospital, serving as both Architect of Record and Parking Consultant. The project included a 355-space staff deck and a 473-space visitor deck, developed in collaboration with CBRE. Designed to expand parking capacity and enhance operational efficiency, the new facilities support Tacoma General’s commitment to delivering high-quality healthcare services.



OSSINING MULTI-MODAL TRANSPORTATION HUB
OSSINING, NY



The Village of Ossining’s Multi-Modal Transportation Hub Parking Garage is a mixed-use facility offering 240-space parking and ground-level retail, designed to complement its surrounding historic neighborhood. Featuring electric charging infrastructure and an electric bike rental facility, the structure provides safe and convenient access to the adjacent Old Croton Aqueduct Trail and to Ossining’s downtown.



RECENT PROJECTS

BRICK CHURCH GARAGE

EAST ORANGE, NJ

THA designed a 7-level, 1,186-space parking structure that serves as the catalyst for a new multi-phased development located directly across from New Jersey Transit's Brick Church Station. This thoughtfully planned structure supports both short- and long-term parking needs, with the lower levels offering open, convenient access for patrons visiting nearby restaurants, retail stores, and the adjacent ShopRite. The upper levels are reserved for residents, train commuters, and monthly permit holders, providing flexibility and long-term parking solutions in a growing transit-oriented community.

In anticipation of the broader mixed-use development, THA collaborated closely with architect Minno & Wasko to ensure the parking structure could accommodate future construction and surrounding infrastructure. A planned building will eventually wrap around two sides of the garage, housing a combination of restaurants, retail, and residential units. To support this future integration, THA strategically aligned the parking levels with the expected floor heights of the wrap-around building. In addition, the structure incorporates removable panels that will later serve as pedestrian access points into the building once it is constructed, ensuring a seamless connection between the garage and the mixed-use development.

To create a sense of cohesion with the surrounding neighborhood, the parking structure was designed with a thin brick façade that reflects the character and heritage of the area. The garage not only provides critical infrastructure for current and future users, but also serves as a key component in shaping a vibrant, walkable, and transit-oriented district in East Orange, NJ.



JPMORGAN CHASE 2CC PARKING GARAGE

WILMINGTON, DE

By centralizing scattered parking capacity from multiple satellite surface lots to one 703-space parking structure, THA joined JPMorgan Chase's ambitious revitalization of their Delaware campus to create an attractive employee experience. Wohlsen Construction Company engaged THA to provide full design and construction administration services for the project. With this garage, JPMorgan Chase employees can park on campus beside the newly renovated and updated offices. As one of the largest employers in the Wilmington, DE region, this convenience will greatly benefit the community.

Most notably, JPMorgan Chase is deeply concerned with their environmental impact, and requested a concrete mix that generates less carbon dioxide during construction. It is THA's understanding that this product has not previously been used in a precast concrete parking garage, so THA collaborated with precast fabricator High Concrete to test, evaluate, and approve this mix for the specific conditions and requirements of parking structures. This additive, Pozzotive, is made of post-consumer recycled glass ground into a fine powder. As cement is a high driver of carbon dioxide in the environment, reducing the amount of cement significantly reduces the amount of carbon dioxide produced.

Fitting into a tight urban environment, the construction process required planning to minimize disruption to the streets, sidewalks, and vehicular and pedestrian traffic in the area. The façade features thin brick and color-matched red precast concrete to echo Wilmington's brick aesthetic.

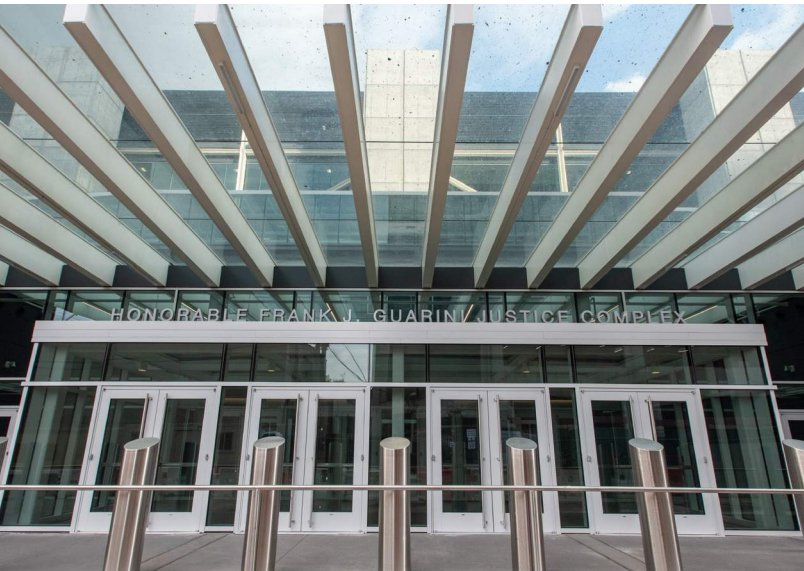
HONORABLE FRANK J. GUARINI JUSTICE COMPLEX GARAGE

JERSEY CITY, NJ

The Honorable Frank J. Guarini Justice Complex brings much-needed space to Hudson County's Judicial System Complex. More courtrooms and offices were added to better serve the community. Designed by Rafael Viñoly Architects, the complex separates public and secure, private areas, uses dedicated entrances for each, and thoughtfully considers how different users move through the building.

THA joined the project team with the project lead Netta Architects to carry through the provided bridging documents all the way to construction. THA conducted the final functional design and structural precast documentation. A unique aspect of the project was that the parking structure was constructed above an active train tunnel, which remained fully operational throughout the duration of the work.

The 471-space parking structure includes a secure, separate area with 50 reserved spaces for judges, ensuring their safety, along with designated parking for staff and jurors. A portion of the building's volume flies overtop the garage, supported by massive stilt-like concrete cores. The aesthetic façade of the perforated metal panels encapsulates the garage and complements the architectural character of the overall complex, making the structure a discreet yet essential component in support of the county's judicial operations.



RECENT PROJECTS

RESTORATION OF THE

GOVERNMENT CENTER PARKING GARAGE YONKERS, NY

In 2009, THA provided condition appraisal services for the Government Center Garage (GCG), originally designed in the 1970s by I.M. Pei, who conceptualized an interconnected government center, with a walkway from the parking structure to a library, police station, and judicial space, adjacent to City Hall. While the garage was the only structure that was built from the overall design, this garage has served businesses in the downtown Getty Square region for decades. THA's expertise extended the structure's lifespan and ensured its ongoing contribution to the City of Yonkers.

More recently, THA was retained for full design of a new parking structure to serve the City Hall and Cacace Justice Center. During the process of evaluating the existing GCG structure, which the City planned to demolish, THA concluded that its condition and capacity could continue to serve the community. THA proposed a restoration and upgrade effort that would ultimately benefit the City of Yonkers by maintaining an existing resource and reducing the size of the new garage.

For this 2023 aesthetic enhancement upgrade and restoration, THA provided a comprehensive plan to significantly improve the user experience of this five-story structure. This included both functional changes and aesthetic enhancement. On a practical level, THA re-striped the parking spaces, eliminated uncomfortably tight parking spots, and improved traffic circulation. Additionally, THA increased interior and exterior lighting, both of which increase visibility and safety within the garage.

THA's aesthetic upgrade focused on highlighting both vehicular and pedestrian entrances, enhancing elevator and stair vestibules, and adding visual signifiers to assist in wayfinding and orientation within the structure. This included opening the stairs to increase visibility and passive security, and applying color to distinguish tiers. For the retail and office space at grade, THA addressed a number of aesthetic considerations, replacing metal panels and a ceiling, as well as adding new railings and awnings.

The garage's dynamic and colorful façade, as well as a digital display that announces city-related programs, invigorates the surrounding public space. This, in addition to all of THA's collective restoration strategies, has elevated the experience that users will have for decades to come.



ADDITIONAL PROJECT HIGHLIGHTS

FLORIDA

- Baptist Health South Florida Healthcare Parking Garage, Miami, FL
- City of Dunedin Parking Garage Design Criteria, Dunedin, FL
- Pompano City Hall Parking Garage, Pompano Beach, FL
- University Miami Pinecrest Parking Garage, Miami, FL

GEORGIA / SOUTHEAST

- Belhaven University Parking Deck, Jackson, MI
- Coca-Cola Garage Assessments, Atlanta, GA
- Jefferson Community & Technical College Parking Deck, Louisville, KY
- Memphis Downtown Parking Assessment, Memphis, TN
- Middle Tennessee State University, Murfreesboro, TN

NORTHEAST

- Boston Water & Sewer Commission Parking Garage, Boston, MA
- City of Keene Garage Feasibility Study, Keene, NH

NEW JERSEY / NEW YORK

- Brooklyn Hospital Garage PIPS Assessment, Brooklyn, NY
- District North Garage Design, Berkeley Heights, NJ
- Lincoln Medical Garage Restoration, Bronx, NY
- Rutgers Health Parking Garage, New Brunswick, NJ
- Trenton-Mercer Airport Parking Garage, Ewing Township, NJ

PENNSYLVANIA

- Children's Hospital of Philadelphia - Grays Ferry Parking Garage, Philadelphia, PA
- Hive Parking Structure (Parksmart Certified), Pittsburgh, PA
- Lehigh Valley Airport Parking Garage Design, Allentown, PA
- Penn Medicine Montgomeryville Parking Garage, North Wales, PA

ENHANCE YOUR PARKING KNOWLEDGE

THA PRESENTATION TOPICS

Join us for a series of parking-related presentations. With six categories to explore, these sessions will “enhance your parking knowledge” and equip you with effective parking, planning, and design strategies. Please see our list of presentations below, some of which having obtained AIA Accreditation.

THA understands the important role parking plays in development. Since 1994, THA has spearheaded over 1,000 parking projects, totaling nearly 1,000,000 spaces. Our goal is to help meet your parking solutions. Welcome to the world of parking!

1 PLANNING & DEVELOPMENT

- Challenges & Best Practices for Parking in Public/Private Partnerships (1 AIA LU)
- Parking Planning for Smart Growth & Downtown Development (1 AIA LU/HSW)
- Developing a Parking Master Plan that meets Your Future Needs (1 AIA LU/HSW)

2 DESIGN & AESTHETICS

- Creating People Places to Promote Vibrant Environments (1 AIA LU/HSW)
- Best Practices in Parking Planning & Design (1 AIA LU/HSW)
- Best Practices & Trends: Design Opportunities for Parking Structures, Old & New (1 AIA LU/HSW)

3 TRENDS

- Emerging Trends in Personal Mobility & the Future of Structured Parking (1 AIA LU/HSW)
- Strategies to Respond to Trends in Real Estate Development & Advancements in Mobility (1 AIA LU/HSW)

4 SUSTAINABILITY & PARKSMART

- Strategies, Return on Investment, & Certification (1 AIA LU/HSW)
- The Gas Station of the Future / EV Charging & Solar Power (1 AIA LU/HSW)

5 TECHNOLOGY & EQUIPMENT DEVELOPMENT

- Trends in Parking Access Revenue Control & Guidance Systems

6 PARKING STRUCTURE ASSET MANAGEMENT

- Parking Structure Durability Design and Asset Management

MEET YOUR PARKING EXPERTS

TODD HELMER
PE, SE
CEO



JIM ZULLO
AICP, PP, LEED AP, CAPP
President



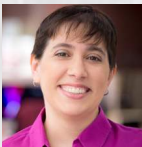
KEVIN CARRIGAN
PE, SE, QPSI
Principal,
Vice President



CHRIS BIETER
PE
Director of Operations



VICKY GAGLIANO
AICP, CAPP, LEED AP
Director of Parking Planning
& Mobility Consulting



JAVIER SANCHEZ
AIA
Director of Operations



JON SHISLER
Director of Design



ACCESS OUR LATEST BROCHURE



Take a look



NYC PERIODIC INSPECTION OF PARKING STRUCTURES

BROCHURE RESOURCES For more information on our services email us at info@tha-consulting.com



- PLANNING
- PARKING STUDIES
- FUNCTIONAL DESIGN
- ARCHITECTURE & ENGINEERING
- CONSTRUCTION
- OPERATIONS
- ASSET MANAGEMENT
- EXPANSION & RENOVATION

PHILADELPHIA GARAGE TOUR 📍

Our team visited five Philadelphia projects to reflect on design choices, challenges, and successes. The tour highlighted our diverse work and inspired new ideas. We ended the day with a sunny happy hour at Cira Green, taking in the city views from our final stop.



STOP #1

PIAZZA ALTA

NORTHERN LIBERTIES
PARKING GARAGE



STOP #2

TEMPLE UNIVERSITY

BELL & MONTGOMERY
PARKING GARAGES



STOP #3

NAVY YARD

1201 INTREPID
PARKING GARAGE



STOP #4

PENN MEDICINE

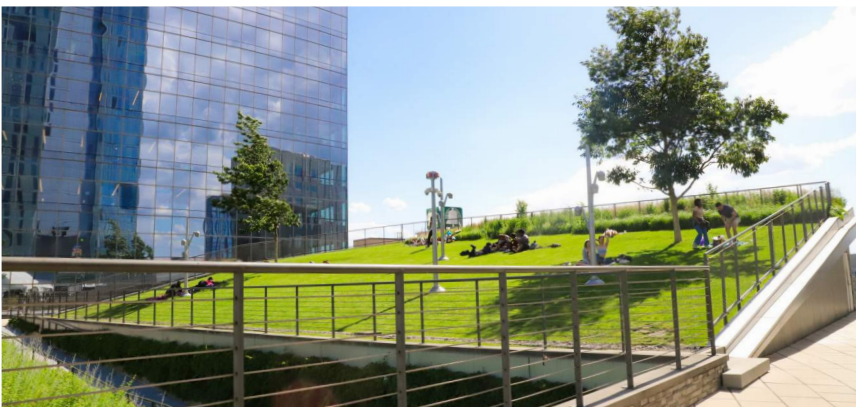
PENN PRESBYTERIAN MEDICAL
CENTER PARKING GARAGE



STOP #5

CIRA CENTRE SOUTH

SOUTH PARKING GARAGE



THA BBQ



An afternoon of fun games, delicious food, and great company. We shared a barbecued meal, competed in a cornhole and ladder ball tournament, and enjoyed the beautiful day!



FALL POTLUCK



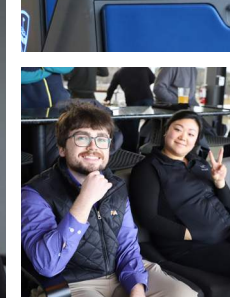
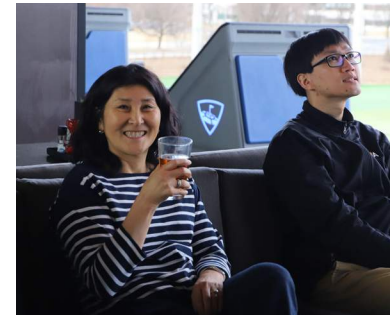
Our staff contributed their favorite comfort food at our fall-themed potluck, which mixed Thanksgiving-inspired dishes with other cool-weather favorites.

INTERNATIONAL WOMEN'S DAY



This International Women's Day, our team celebrated our achievements, shared our journeys, and inspired each other to keep designing a more equitable world.

TOP GOLF



We kicked off 2025 with a friendly competition at Topgolf. Gatherings like this remind us that success isn't just about what we accomplish, but who we achieve it with.

WINTER HOLIDAY PARTY

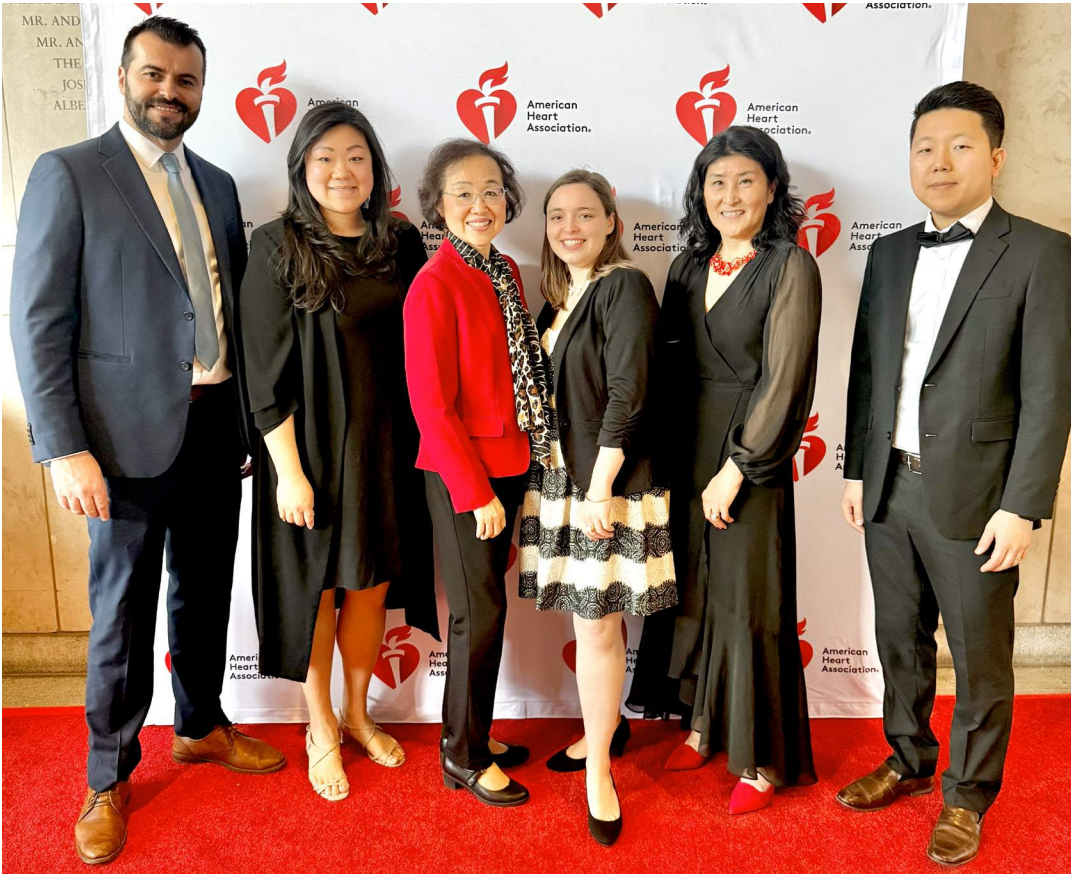


Wrapped up 2024 with a fun team celebration, highlighting the impact and contributions of three team members. With a strong finish to the year, we're energized and looking forward to all that 2025 will bring.

CHARITABLE EVENTS



AMERICAN HEART ASSOCIATION



Continuing our longstanding support of the American Heart Association, THA attended both the fall Heart Walk and spring Heart Ball. What great events to join this community of health-focused leaders!

◀ HEART BALL

▼ HEART WALK



CHESTER COUNTY FOOD DRIVE



Following a spring volunteering effort at the Chester County Food Bank, our Philadelphia office came together to continue giving back to our local community members in need with a food drive.

NORRISTOWN HOSPITALITY CENTER

THA staff assembled, delivered, and distributed sandwich lunches to the Norristown Hospitality Center. The Center provides resources, meals, and Code Blue Emergency shelter to people experiencing homelessness.



ROOSEVELT ELEMENTARY SCHOOL



At Roosevelt Elementary School's career day, Reginald Piggee Jr. taught students about being an architect and highlighted the opportunity for anyone to flourish in this field. At THA, we value bringing diverse perspectives to every aspect of our work, including how we design people-focused spaces.

HONORING THE LIFE OF OUR FOUNDER

TIMOTHY H. HAAHS

A LIFE OF FAITH, EXCELLENCE, AND SERVICE TO OTHERS

MARCH 29, 1957 - DEC 26, 2024

This month, we pause to reflect and honor our company's founder, Timothy Haahs, a man whose life was marked by deep resilience, faith, excellence and purpose.

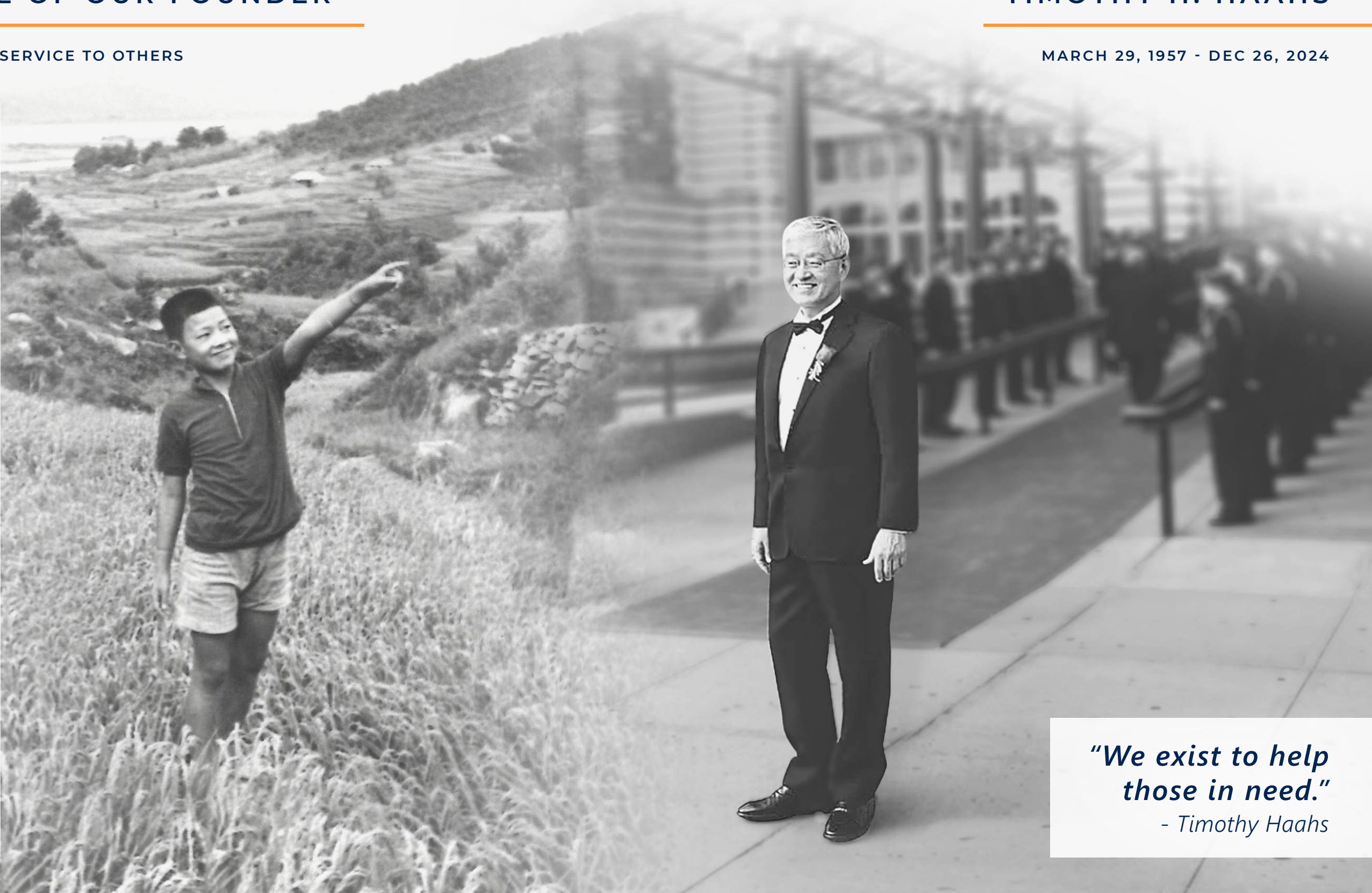
Tim grew up in unusual circumstances — in a leprosy colony in South Korea where his father served as a missionary and pastor. These formative years of watching and helping his parents serve the most underprivileged people in society gave Tim an early heart of compassion towards those most in need.

In his early thirties, Tim received two life-saving heart transplant. This experience further instilled in him a profound sense of gratitude and calling to serve others, which became the foundation of both his personal and professional life.

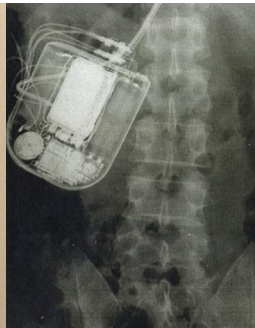
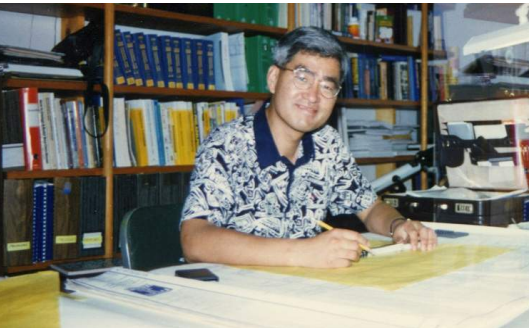
Tim established this company not just as a business, but as a vehicle to positively impact real lives. In doing so, he fostered a culture where business thrives on people and not at the expense of them, and where work can be of great and meaningful service to humanity.

These values continue to guide the way we work, support one another, and serve our clients and communities.

As we honor his memory, we remain committed to carrying forward his passion for excellence and serving others.



"We exist to help those in need."
- Timothy Haahs





info@THA-Consulting.com

www.THA-Consulting.com

PHILADELPHIA
NEW BRUNSWICK
ATLANTA
MIAMI