



# HAPPENINGS

CELEBRATING 30 YEARS

2024







# MESSAGES FROM THE LEADERSHIP



**TODD HELMER, PE**  
CEO

Marking the significance of our company's 30th anniversary, we strive to continue our commitment to a future dedicated to our clients, staff, and teaming partners, who have placed their trust in us throughout the years. We extend our heartfelt gratitude to everyone who has played a role in our growth.

Here's to the next chapter of our shared success story!



**JIM ZULLO**  
AICP, CC, LEED AP, CAPP  
President

Thirty years ago, THA embarked on a journey to create a company that stands for quality, innovation, and integrity. Today, we celebrate not just our longevity, but the enduring relationships we have built with our clients, partners, and community. I am proud of what we have accomplished together and excited for the opportunities that lie ahead.



**JANICE HAAHS, MBA**  
CFO

From a home garage and a dream, to a portfolio to be proud of! THA continues to dream today!

We are blessed with amazing staff who each bring something special to our mission. With our community's support, and the lessons we've learned, we enter each day with confidence and faith in the future. Together, we bring far more than our three decades of experience to each project. Together, we bring our dedication, our care, our commitment, and our community.



# EXPANDING THE TEAM!



THA is excited to share news of our firm's growth. Over the past year, we've welcomed new colleagues to the team and celebrated professional achievements. THA is thankful for the hard work and dedication of all our employees.

## NEW COLLEAGUES



**ANNA GROSSO, CPA**  
*Accountant*



**MEGAN PENHALE**  
*Marketing Coordinator*



**ALBEN KEZHIYUR, PE**  
*Project Manager*



**KIRA HASTINGS**  
*Business Administration Assistant*



**MICHAEL WILLHOIT**  
*Project Designer*



**TYLER THORIUS**  
*Project Engineer*



**MEGAN MEI**  
*Accountant*



**ERIC MENZEL**  
*Parking Planning & Mobility Specialist*

## PROMOTION



**DRITAN CAKALLI**  
*Project Manager*



# OUR DREAM GARAGE



Our staff dreamt of amenities and imagined garage possibilities.

## BEHIND THE RENDERING



**ELIAZAR  
HENRIQUEZ**  
*Design Intern*



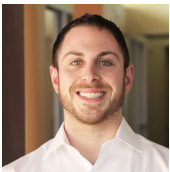
**KRISTEN  
NADEAU**  
*Project Designer*



**VERNON JONES**  
A rooftop park of  
greenery and a ground  
level for entertainment.



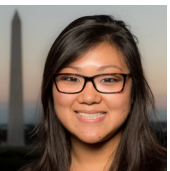
**MEGAN PENHALE**  
A ferris wheel for  
transportation and a  
view.



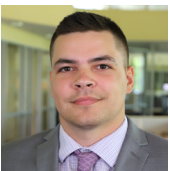
**DOMINIC  
BARBONE**  
A fun rooftop activity,  
like mini golf!



**GUSTAVO MUR**  
(3) levels for a spacious,  
stress-free parking  
experience.



**CHRISTINA  
HAAHS**  
Clean your car while you  
park, in a drive-thru car  
wash!



**NICK GORE**  
A crazy slide from the  
top to the bottom.



**MICHAEL  
WILLHOIT**  
Food trucks would be  
fun!



**RENDERING  
VIDEO**

Please note that these are just fun ideas created by our staff. We recommend hiring a parking consultant to implement unique features and amenities like these.





# CELEBRATING 30 YEARS AT THA



## 1994

### Genesis: The Beginning

From a home garage, Timothy Haahs & Associates, Inc. started our entrepreneurial journey with a commitment to help those in need. Specializing in parking solutions, our focus on creating “people places” offered a forward-thinking, fresh perspective in the industry.

## 1998

### Our First Mixed-Use Design

On the forefront of the trend toward mixed-use parking, THA designed our first structure with retail at ground level in 1998. This structure, the Hamilton Square Parking Garage at The University of Pennsylvania, laid the foundation for the many mixed-use parking structures we’ve designed since.

## 2005

### Opening New Doors

THA opened our first regional office in Miami, FL. This was followed by opening our Atlanta, GA office in 2006 and our New Brunswick, NJ office in 2009, expanding our ability to easily meet regional clients’ needs.

## 2008

### Restoration Services

We appreciate the critical role that parking garage restoration services and maintenance programs play in preserving the longevity of the structures. The Union Station Parking Structure stands as a prime example of our commitment to comprehensive maintenance practices.

## 2015

### Groundbreaking Mixed-Use Façade Aesthetics

For the Miami Design District, THA facilitated the realization of two mixed-use structures on the cutting edge of façade design. Both structures incorporate multiple artists’ concepts, proving that unique façade design creates a local landmark.

## 2017

### Sustainability: Building a Better World

THA continues its commitment to sustainability by prioritizing the advancement of Parksmart. In 2017, when Parksmart became the new sustainability benchmark, many staff became certified Parksmart Advisors. Favorite sustainable designs in our portfolio include LG Industries HQ Parking Structure and Grant Park Zoo.

## 2019

### Projects Around the World

Located in South Korea, Lux Tower suits a variety of destinations: a theme park, an events venue, a daycare, restaurants, and more. Over our 30 years, we have worked on international projects in the UAE, China, South Korea, South Africa, and other countries.

## 2021

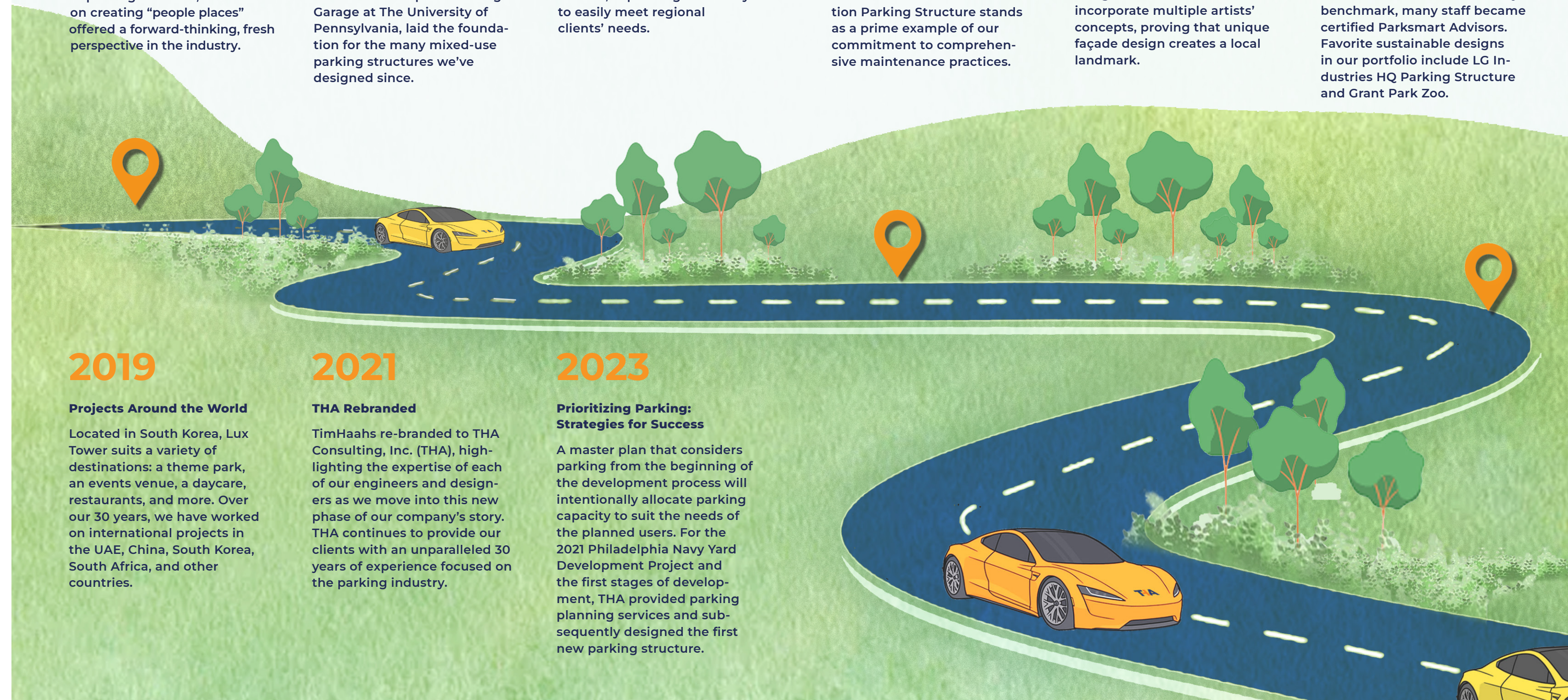
### THA Rebranded

TimHaahs re-branded to THA Consulting, Inc. (THA), highlighting the expertise of each of our engineers and designers as we move into this new phase of our company’s story. THA continues to provide our clients with an unparalleled 30 years of experience focused on the parking industry.

## 2023

### Prioritizing Parking: Strategies for Success

A master plan that considers parking from the beginning of the development process will intentionally allocate parking capacity to suit the needs of the planned users. For the 2021 Philadelphia Navy Yard Development Project and the first stages of development, THA provided parking planning services and subsequently designed the first new parking structure.





# 30<sup>TH</sup> KICK-OFF EVENT



EAT. DRINK. CELEBRATE.







FEATURED PROJECT

# PENN PRESBYTERIAN MEDICAL CENTER PARKING GARAGE

PHILADELPHIA, PA



# RIBBON CUTTING

## PENN PRESBYTERIAN MEDICAL CENTER PARKING GARAGE

On a cool, early-autumn day, we joined Penn Medicine for the ribbon-cutting to officially open the Penn Presbyterian Medical Center Mixed-Use Parking Garage. Embracing the festive atmosphere, we celebrated the flexibility, capacity, and accessibility of care this garage will add to the hospital's ability to serve patients, visitors, and Penn Medicine's own staff. As the Architect and Engineer of Record, THA was responsible for the 9-level precast parking structure of 1,500 spaces. Its two fully-glazed stair and elevator towers cut a dramatic silhouette while complementing the surrounding West Philadelphia neighborhood. Drawing on the architectural language already present on campus, the parking structure blends with the community through its precast concrete panels with embedded thin bricks. With advanced technology to assist in finding a parking space, enhanced security for all users, and convenient access to the hospital, the parking structure will serve its community for decades to come.



Centering the pedestrian presence, 6,400 sf of mixed-use space on the ground level integrates the structure with its environment. A covered walkway encourages pedestrians from the street, nearby public transit, or the garage itself to visit the hospital. By connecting the main stair and elevator tower of the parking structure directly to the main hospital building, the walkway contributes to the safe, walkable, comfortable atmosphere of the hospital's campus.



9  
LEVELS

1,483  
PARKING SPACES

482,000  
TOTAL SQ. FEET





# DOWNTOWN MOBILITY CENTER PARKING GARAGE

Memphis, TN

Adding 960 parking spaces to downtown Memphis, the Downtown Mobility Center (DMC) facilitates access to entertainment venues, the convention center, the riverfront, and more. With capacity for electric vehicles and bicycles, the mobility center will serve all visitors to this vibrant area. To encourage pedestrian comfort and connectivity, the DMC also features 11,000 square feet of retail space and 16 murals from local artists.



# WEST CHESTER UNIVERSITY COMMONS PARKING GARAGE

West Chester, PA



The North Campus Drive Parking Facility at West Chester University, a standalone garage serving the University's Commons building, features 457 parking spaces over 6 tiers. With bicycle racks and electric vehicle charging stations, the garage positions itself for the long-term needs of the university's faculty and staff. Uniquely, this garage supports the cooling tower for the adjacent Commons building, preserving green space on campus and encouraging the pedestrian experience. To coordinate architecturally, the parking structure incorporates the same brick façades, doors, windows, and canopies as the Commons building.





# M STATION PARKING GARAGE

*Morristown, NJ*



SJP Properties engaged THA to provide parking design and consulting services throughout the master planning phases of the M-Station development. We continued as Designer and Architect of Record on their parking structure, collaborating with engineers and developers on this redevelopment project. Located minutes from the Morristown train station, M-Station includes offices, dining, retail space, and landscaped public plazas.



# 1201 INTREPID PARKING GARAGE

*Philadelphia, PA*



THA advised on the parking planning component of the Philadelphia Navy Yard Master Plan, which aims to craft a vibrant residential community and commercial center. Considering efficiency, transportation needs, and energy distribution, THA consulted on site feasibility and parking planning. We were subsequently invited to design an early step of this revitalization, the parking structure on Intrepid Avenue. This 6-tier, 661-space precast structure will serve residents, nearby office employees, hotel guests, and local business patrons as development continues.





# AWARDS 2023-2024



## M STATION

Morristown, NJ

ULI AWARD OF EXCELLENCE  
NJ DEVELOPMENT  
PROJECT OF THE YEAR



## LORD & TAYLOR TRAIN STATION REDEVELOPMENT PLAN

Westfield, NJ

NEW JERSEY FUTURE  
2023 SMART GROWTH  
AWARD WINNERS



Renderings courtesy of HBC | Streetworks Development



## HINCHLIFFE STADIUM PARKING GARAGE

Paterson, NJ

NEW JERSEY FUTURE  
2023 SMART GROWTH AWARD WINNERS

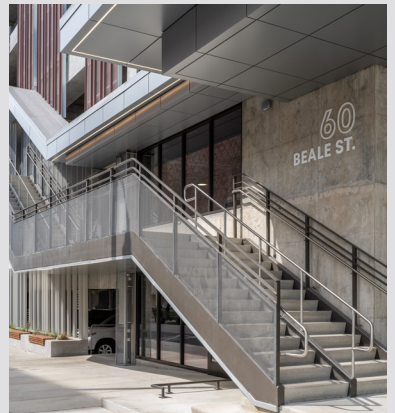
ULI AWARD OF EXCELLENCE  
PUBLIC / PRIVATE PARTNERSHIPS



## DOWNTOWN MEMPHIS COMMISSION MOBILITY CENTER PARKING GARAGE

Memphis, TN

MEMPHIS BUSINESS JOURNAL  
BUILDING MEMPHIS AWARD  
BEST NEW CONSTRUCTION  
(MEDIUM CATEGORY)



## UNIVERSITY OF GEORGIA HULL STREET PARKING DECK

Athens, GA

AMERICAN CONCRETE INSTITUTE  
GEORGIA CHAPTER  
2024 DAN BROWN AWARDS



## PRESENTATIONS

**International Parking & Mobility Institute**  
Navigating the Parking, Mobility,  
& Development Planning Journey

**Pennsylvania Parking Association**  
EV Building Blocks: Planning, Design,  
Construction Considerations for EVSE  
Implementation

**Rutgers University Bloustein School**  
People, Parking, and Planning:  
Placing People Above Parking

**New Jersey Parking Institute**  
Parking Design Trends

**The Mid-Atlantic Parking Association**  
Out with the Old & In with the New!  
Opportunities & Strategies to Aesthetically  
Enhance & Improve Older Parking Structures



# ENHANCE YOUR PARKING KNOWLEDGE

## THA PRESENTATION TOPICS

Join us for a series of parking-related presentations. With six categories to explore, these sessions will “enhance your parking knowledge” and equip you with effective parking, planning, and design strategies. Please see our list of presentations below, some of which having obtained AIA Accreditation.

THA understands the important role parking plays in development. Since 1994, THA has spearheaded over 1,000 parking projects, totaling nearly 1,000,000 spaces. Our goal is to help meet your parking solutions. Welcome to the world of parking!



THA CONSULTING, INC.  
DBE, W/MBE

### 1 PLANNING & DEVELOPMENT

- Challenges & Best Practices for Parking in Public/Private Partnerships (1 AIA LU)
- Parking Planning for Smart Growth & Downtown Development (1 AIA LU/HSW)
- Developing a Parking Master Plan that meets Your Future Needs (1 AIA LU/HSW)

### 2 DESIGN & AESTHETICS

- Creating People Places to Promote Vibrant Environments (1 AIA LU/HSW)
- Best Practices in Parking Planning & Design (1 AIA LU/HSW)
- Best Practices & Trends: Design Opportunities for Parking Structures, Old & New (1 AIA LU/HSW)

### 3 TRENDS

- Emerging Trends in Personal Mobility & the Future of Structured Parking (1 AIA LU/HSW)
- Strategies to Respond to Trends in Real Estate Development & Advancements in Mobility (1 AIA LU/HSW)

### 4 SUSTAINABILITY & PARKSMART

- Strategies, Return on Investment, & Certification (1 AIA LU/HSW)
- The Gas Station of the Future / EV Charging & Solar Power (1 AIA LU/HSW)

### 5 TECHNOLOGY & EQUIPMENT DEVELOPMENT

- Trends in Parking Access Revenue Control & Guidance Systems

### 6 PARKING STRUCTURE ASSET MANAGEMENT

- Parking Structure Durability Design and Asset Management

## MEET YOUR PARKING EXPERTS

TODD HELMER  
PE, SE  
CEO



JIM ZULLO  
AICP, PP, LEED AP, CAPP  
President



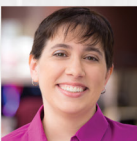
KEVIN CARRIGAN  
PE, SE, QPSI  
Principal,  
Vice President



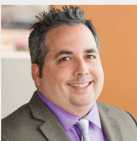
MIKE APP  
AIA, LEED AP  
Director of Architecture,  
Project Manager



VICKY GAGLIANO  
AICP, CAPP, LEED AP  
Director of Parking Planning  
& Mobility Consulting



JAVIER SANCHEZ  
AIA  
Director of Operations



JON SHISLER  
Director of Design



## ACCESS OUR LATEST BROCHURE



Take a look



## NYC PERIODIC INSPECTION OF PARKING STRUCTURES

BROCHURE RESOURCES For more information on our services email us at [info@tha-consulting.com](mailto:info@tha-consulting.com)



## THA PARKING DATABASE

Everything you need to know about parking



CHECK IT OUT

- PLANNING
- PARKING STUDIES
- FUNCTIONAL DESIGN
- ARCHITECTURE & ENGINEERING
- CONSTRUCTION
- OPERATIONS
- ASSET MANAGEMENT
- EXPANSION & RENOVATION



## EMPLOYEE APPRECIATION DAY

To celebrate our staff, our Philadelphia office hosted licensed massage therapists for Employee Appreciation Day in March. We treated our staff to lunch and relaxing, 15-minute back massages. We loved gathering together to chat over delicious pita wraps and then enjoying our stress-relieving treat.



## INTERNATIONAL POTLUCK

Our Philadelphia office added some festivity on a Thursday afternoon with an International Potluck. Staff each contributed a dish and enjoyed a varied, delicious feast. We enjoyed the opportunity to chat and spend the time together, and of course, we loved the food!



## INTERNATIONAL WOMENS DAY

Celebrating the women on our staff, we gathered for a delicious meal and great conversation to acknowledge the presence and achievements of our female staff. Here's to the women who inspire us every day and to the beautiful memories we create together. Cheers to more shared meals and endless support.



## GINGERBREAD HOUSES

As we approached the winter holiday season, we embraced our creative sides and decorated gingerbread houses! Our ambitious engineers and designers dreamed of adding chimneys, balconies, and cupolas—or perhaps designing the next award-winning garage! However, we stuck to our kit houses and had a blast with candy, icing, and teamwork.



## HOLIDAY PARTY

On a chilly December evening, our team gathered at Normandy Farms for laughter, friendship, and a delightful meal. We celebrated a four-way tie for our THA Impact Award, honoring exceptional team members. Congratulations to Dritan Cakalli, Harry Kwak, Peter Sadowski, and Jon Shisler.





# CHARITABLE ACTIVITIES



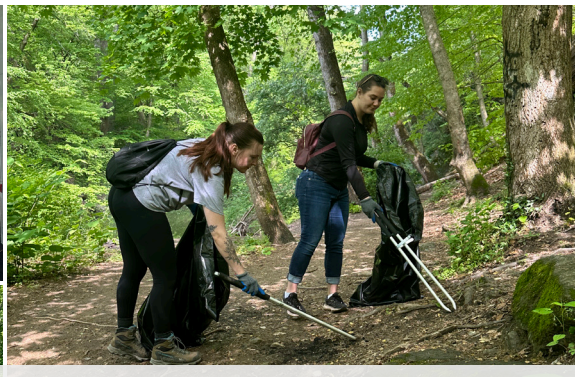
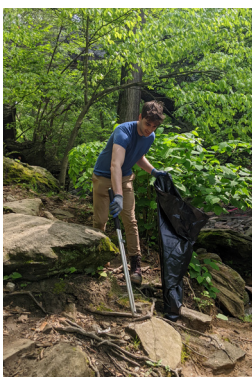
## ELIJAH'S PROMISE

Elijah's Promise gives away single-serving, nutritionally diverse meals. With goofy hairnets and a commitment to hygiene, our staff packed sandwiches and assembled lunchboxes that contained chicken, pasta, salad, and a side of bread. At the end of our shift, we enjoyed these dishes for lunch. Yum!



## AMERICAN HEART ASSOCIATION HEART WALK

After a month of heart health education, healthy recipe suggestions, and a heart health Jeopardy game, we joined the American Heart Association's Philadelphia Heart Walk. It was a brisk morning filled with community support, raising awareness and funds for life-saving efforts combating food insecurity, and promoting CPR training. Our staff celebrated heart disease survivors while taking steps toward healthier, active lifestyles.



## WISSAHICKON PARK CLEAN-UP

With gloves and empty trash bags, we set out to the infamous "Devil's Pool" in the Wissahickon Valley Park. There, we enjoyed lovely spring weather while gathering 12 bags of waste. We were proud to see how picturesque the scenery looked after our work, and we remind everyone: Leave No Trace!



## CHESTER COUNTY FOOD BANK

THA staff diligently sorted beets, cucumbers, and carrots at the Chester County Food Bank. Alongside learning how the food bank gathers these imperfect vegetables from local farms, home gardens, and other sources, we portioned the bulk products into family-sized packages to be distributed in the Chester County community. After our afternoon of quality control, weighing, and packaging, we were delighted to see the boxes of healthy food ready to be shared.





[info@THA-Consulting.com](mailto:info@THA-Consulting.com)  
[www.THA-Consulting.com](http://www.THA-Consulting.com)

PHILADELPHIA  
NEW BRUNSWICK  
ATLANTA  
MIAMI