



HAPPENINGS

FALL 2023





GLOBAL LEADERSHIP SUMMIT

Our THA team attended the annual Global Leadership Summit, one of the largest leadership experiences. Our staff reflected on the lessons in effective leadership that resonated with them. Each team member can enhance our professional success by integrating these communication and leadership principles into their daily interactions. Here are some key insights from our staff.

Go for it! Take chances and don't be afraid to fail, and you'll succeed.

ATOMIC HABITS

It's not about making goals. Setting goals is easy. That's not the hard part, the hard part is making change.

EXAMPLE:
Someone just driving to the gym and not even going in. The focus is on getting the physical body to the gym and the next steps will follow.



BYRON ADAMS
Project Manager

CONSISTENCY BREEDS A CULTURE OF TRUST

Creating expectations and maintaining your accountability allows your team to feel they can trust you, not just to complete your tasks but also on a human level. Setting the tone of a trustworthy environment through consistency allows for flexibility and provokes others to do the same.



MEGAN MEI
Accountant

STEP OUT OF YOUR COMFORT ZONE

Seeking failure is part of the journey. If you're not seeking failure, then you may find yourself too comfortable and never moving forward.



NICK GORE
Project Designer

LISTEN TO THE PEOPLE, LEARN FROM THE PEOPLE, LOVE THE PEOPLE.

Listening is about including and respecting your colleagues, not just for the sake of work, but also for the community. There are opportunities to learn and grow together when you appreciate each person's creative problem-solving for collaboration.



KIRA HASTINGS
Business Admin Assistant

Have a two-way conversation. Understand both the employee as well as the employer. This will build relationships and trust. You will always be limited as a leader if you can't trust the people around you. Never regret trusting others.

**EMPATHY
CONSISTENCY
+ TRANSPARENCY
= TRUST**

I notice, & you matter.



AARON MONTALVO
Project Designer

THA'S KEY TAKEAWAYS



ANXHELA LALA Visiting Student	CALEB KANG Business Admin Intern	ADAM DISCHER Engineering Intern	MICHAEL LESTER Engineering Intern
---	--	---	---

BLUE BELL OFFICE

THA INTERNS & VISITING STUDENT

Over the summer and into fall, THA welcomed four interns in our Philadelphia and New Brunswick offices, along with a visiting student from Italy. We value the opportunity to teach and learn from emerging talent in our work environment.



ERIC MENZEL
Parking Studies Intern

NEW BRUNSWICK OFFICE

Q&A WITH THA

WHAT IS YOUR FAVORITE PROJECT?

Check out some of THA team member's favorite projects and their stories behind why:



“ This was the first project I managed and witnessed to completion at THA. From concept to a functional, aesthetically pleasing asset, this project is a source of immense pride and satisfaction, making it a standout accomplishment in my career. What truly makes it exceptional is the remarkable collaboration within the project team, fostering a strong sense of accomplishment and teamwork. ”



CHRIS BIETER
Director of Operations
Fort Lee Guntzer Parking Garage
 Fort Lee, NJ



JENN CROWLEY
Proposal Coordinator
Grant Park Gateway Garage
 Atlanta, GA

“ The Grant Park Gateway Garage has always been the most striking to me. The initial image a parking garage invokes is one of a dreary, indistinct structure wedged tightly into an urban landscape. Grant Park changed my perception of what a parking garage could be like. I love the way it mirrors its surrounding natural environment, creating a lush and peaceful space. ”



Q&A WITH THA




KRISTEN NADEAU
Project Designer
Penn Presbyterian Medical Center Parking Garage
 Philadelphia, PA

“ The façade and landscaping are modern and elegant, and yet speak to the surrounding context. The façade has a delicate white metal screen with a brick base. The landscaping relieves the urbanized context with a beautiful public space. This garage will be very beneficial by providing parking for the hospital staff, while the businesses on the first floor will benefit the surrounding residents. I live close to Penn Medicine Garage, so it has been a joy watching this project come together. ”



“ It was awesome to work on our first international project, located near my hometown. The mixed-use aspect contributed greatly to its success, and seeing the design materialize was exciting. The façade featured a color-changing film strip reacting to sunlight, creating a captivating aesthetic that shifted with the sun's position. ”



NAMHYUN KIM
Project Manager
BlueOne Waterpark Mixed-Use Parking Garage
 Gyeongju City, Korea



RYAN KLASS
Project Manager
Temple Bell Parking Garage Renovation
 Philadelphia, PA

“ Our team successfully tackled structural challenges to restore an old parking structure. We fixed concrete, made room for a storefront system by altering the stair tower, and added a steel frame to enclose the top tier. We also revamped the exterior with metal panels, replaced the old elevator, and set up a maintenance office on the ground floor. We were thrilled to play a role in solving our client's challenges. ”





FEATURED PROJECT

HINCHLIFFE STADIUM PARKING GARAGE

Paterson, NJ

GRAND OPENING

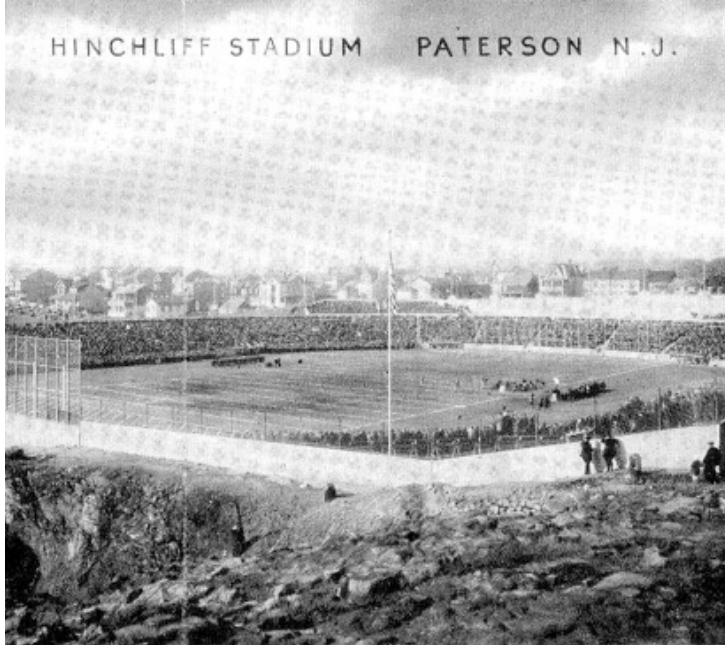
HINCHLIFFE STADIUM PARKING GARAGE

Paterson, NJ

THA Consulting is thrilled to have provided parking planning and design services for a new parking facility supporting the needs of the historic Hinchliffe Stadium in Paterson, NJ. Hinchliffe Stadium boasts a unique and important history, having played a vital role in several monumental eras.

THA worked with RPM Development Group to design the 315-space garage that will serve the parking needs of the many events at the stadium, as well as a nearby residential senior living apartment community. THA served as engineer and architect of record while providing structural engineering, functional design and layout, and architectural design and documentation for the entire structure.

The parking facility includes a precast superstructure with architecturally detailed spandrels, wall panels, and exterior shearwalls on the façade to pay tribute to the unique details and features of Hinchliffe Stadium. A main stair and elevator tower along with a punch thru stair provide vertical circulation for the users of the garage.



Hinchliffe Stadium, circa 1945-50 (Photos courtesy of the Paterson Museum)

THE HISTORY BEHIND HINCHLIFFE



Original ticket window, Hinchliffe Stadium



In the 1920s, this 10,000-seat stadium was paired with an athletic facility. Its purpose served as an investment for the community during the challenging years of the Great Depression in Paterson. It was the home of the New York Black Yankees of the Negro Leagues, and is one of only four such stadiums still in existence today. Currently, the stadium is a multipurpose facility serving two Paterson High Schools, as well as the minor league baseball team, the New Jersey Jackals. Today, this historic stadium has evolved into a multipurpose facility that serves a minor league baseball team, the New Jersey Jackals, and two Paterson High Schools. Its rich history and adaptability overtime has made this an invaluable asset for the community.

If you have any questions, reach out to Jim Zullo, President
jzullo@tha-consulting.com

Hinchliffe before reconstruction began (photographed by Daniel Lugo)





SCAN
FOR
PROJECT
VIDEO

80,870 TOTAL SQ. FEET

7,500
SEATS

4 LEVELS

315
PARKING SPACES



HINCHLIFFE STADIUM PARKING GARAGE RIBBON CUTTING CEREMONY

Paterson, NJ

In May, the Hinchliffe Stadium held an amazing ribbon cutting ceremony for this iconic project. THA is proud to be a part of the project team dedicated to bringing a much needed parking solution to this development, while seamlessly incorporating elements that honor the stadium's historical significance. Our work goes beyond parking – it is a celebration of this living monument to the past and the future of Paterson's Hinchliffe Stadium.



RECENT PROJECTS



CHILDREN'S HEALTHCARE
OF ATLANTA
PARKING GARAGE

Atlanta, GA

THA partnered with Children's Healthcare of Atlanta (CHOA) to optimize parking across multiple locations in the Atlanta metro area. Our parking studies assessed current and future requirements for staff, patients, and visitors, establishing essential demand ratios. We also crafted conceptual designs for new parking facilities to support CHOA's long-term facility growth, including a cutting-edge medical park. This design-build project aims to transform CHOA's parking services, enhancing the experience for all who heal, work, and visit their Atlanta facilities.



PEARL STREET PIAZZA
PARKING GARAGE

Metuchen, NJ

THA designed a 764-space, 6-level parking structure that provided parking for the residential and retail spaces. The structure serves Metuchen residents, NJ Transit commuters from the Woodmont Metro at Metuchen Station, and retail customers. The garage, following a Transit-Oriented Development approach, includes innovative features such as LED lighting, electric vehicle charging stations, bike storage, and a parking office. The garage's façade harmonizes with the surrounding community and residential building through architectural precast components.



NEW JERSEY INSTITUTE
OF TECHNOLOGY SCIENCE
& TECHNOLOGY PARK
PARKING GARAGE

Newark, NJ

THA played a vital role in the development of a 941-space parking structure on NJIT's Newark campus, providing comprehensive design and construction administration services. Our work encompassed feasibility analysis, prime design, project management, parking planning and design, architectural documentation, and structural engineering services. This new parking facility caters to the university's evolving parking requirements for students, faculty, and staff while also accommodating future expansion plans. Furthermore, the design allows for the potential addition of approximately 14,000 square feet of retail/flex space.

NEW BRUNSWICK
PERFORMING ARTS CENTER
PARKING GARAGE

New Brunswick, NJ

The New Brunswick Performing Arts Center (NBPAC) development transformed the Downtown Cultural Arts District in New Brunswick, New Jersey. This project included the development of two state-of-the-art theater spaces, dedicated rehearsal studios, academic and office space. The project also included 207 residential rental apartments and public parking. THA worked with Elkus Manfredi, Prime Architect, and the New Brunswick Parking Authority to design the 7-tier NBPAC mixed-use parking facility that includes 344-parking space, electric vehicle charging stations, TD Bank employee and customer parking, bike parking, ballet rehearsal space, loading docks, and ancillary space. The ground floor of the facility provides sufficient space to permit delivery and sanitation trucks to access the loading docks of the adjacent Performing Arts Center and residential tower.



AWARD OF EXCELLENCE
ARCHITECTURAL DESIGN

Newark Green Street
Parking Garage



AWARD OF EXCELLENCE
MIXED-USE PARKING &
MOBILITY FACILITY DESIGN

Fort Lee Guntzer Street
Parking Garage



TODD HELMER, PE, SE



JIM ZULLO, AICP, LEAP AP, CAPP

JUNE 13TH, 2023

BEST PRACTICES & TRENDS:
DESIGN OPPORTUNITIES FOR
PARKING STRUCTURES, OLD & NEW!



ENHANCE YOUR PARKING KNOWLEDGE

THA PRESENTATION TOPICS

Join us for a series of engaging parking-related presentations. With six categories to explore, these sessions will “enhance your parking knowledge” and equip you with effective strategies. THA understands the important role parking plays in development.

Since 1994, THA has spearheaded over 1,000 parking projects, totaling nearly 1,000,000 spaces. Our goal is to help meet your parking solutions and foster exceptional community experiences. Welcome to the world of parking!



THA CONSULTING, INC.
DBE, W/MBE

SOCIAL MEDIA



YOUTUBE

CHECK OUT OUR VIDEOS:



PROJECT HIGHLIGHTS:
SEPTA WAWA PARKING GARAGE



THA TIPS:
PREPARING PARKING STRUCTURES FOR THE SNOW SEASON

1 PLANNING & DEVELOPMENT

- Challenges & Best Practices in Public/Private Partnerships for Parking
- Parking Planning for Smart Growth & Downtown Development
- Developing A Parking Master Plan That Meets Your Future Needs

2 DESIGN & AESTHETICS

- Creating People Places to Promote Vibrant Environments
- Best Practices in Parking Planning & Design
- Best Practices & Trends: Design Opportunities for Parking Structures, Old & New

3 TRENDS

- Strategies to Respond to Trends in Real Estate Development & Advancements in Mobility
- Emerging Trends in Personal Mobility & the Future of Structured Parking
- Trends & Future Proofing

4 SUSTAINABILITY & PARKSMART

- Strategies, Return on Investment, & Certification
- The Gas Station of the Future/EV Charging & Solar Power

5 TECHNOLOGY & EQUIPMENT DEVELOPMENT

- Trends in Parking Access Revenue Control & Guidance Systems

6 DURABILITY & MAINTENANCE

- Importance of Proactive Maintenance Program
- Design Considerations to Reduce Future Capital Maintenance Needs

MEET YOUR PARKING EXPERTS

TODD HELMER
PE, SE
CEO



JIM ZULLO
AICP, LEED AP, CAPP
President



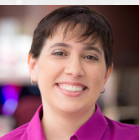
KEVIN CARRIGAN
PE, SE
Principal,
Vice President



MIKE APP
AIA, LEED AP
Director of Architecture,
Project Manager



VICKY GAGLIANO
AICP, CAPP, LEED AP
Director of Parking Planning
& Mobility Consulting



JAVIER SANCHEZ
AIA
Director of Operations



JON SHISLER
Director of Design



LINKEDIN



SUBSCRIBE TO OUR EMAIL LIST:



BROCHURE RESOURCES

For more information on our services email us at info@tha-consulting.com



PENN PRESBYTERIAN MEDICAL CENTER PARKING GARAGE RIBBON CUTTING

Philadelphia, PA

The Penn Presbyterian Medical Center Mixed-Use Parking Garage is designed to accommodate 1,483 parking spaces across 9-levels. This project addresses the medical center's essential parking needs while integrating 6,400 square feet of mixed-use space on the ground level. The parking structure features stair and elevator towers that maximize pedestrian connectivity, passive security, and safety. Its design harmonizes with the campus and neighboring aesthetics and aligns with future campus masterplan development.



MIXED-USE SPACE & PUBLIC PLAZA



1,483
PARKING SPACES



9
LEVELS

482,000
TOTAL SQ. FEET



SCAN FOR
PROJECT VIDEO

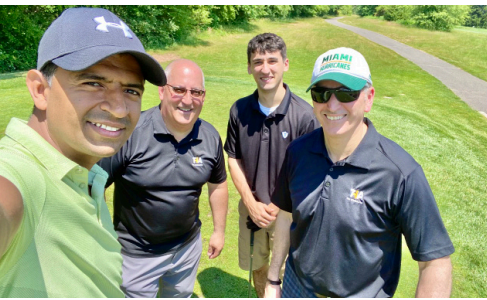
THA TOGETHER



GOLF OUTING

TAKE BREAK & PLAY GOLF!

During the summer, THA staff got together for a fun day of golf! Everyone brought their A+ game and also introduced the love of golf to a few. After enjoying a wonderful time on the grassy green course, the day ended with good food and good company.



AUNT EDNA'S INHERITANCE

QUEST FOR THE THRONE



LUCKY DICE DINER

BANK HEIST



SOCIAL EVENT

ESCAPE ROOM

Who doesn't like a good mystery or problem-solving hunt? With all departments mixed into different groups, we either: sought hidden inheritance; robbed a bank; searched the knick-knacks of a '50s diner; or proved ourselves heir to a throne. Following tidbits of information, we rifled through the rooms in search of figurative treasure. We are happy to report all rooms successful escaped!





info@THA-Consulting.com
www.THA-Consulting.com

PHILADELPHIA
NEW BRUNSWICK
ATLANTA
MIAMI