



HAPPENINGS

SPRING 2023





Q&A WITH THA

WHAT IS YOUR FAVORITE PROJECT?

Check out some of THA team member's favorite projects and the stories behind why:



“The University of Kentucky Mixed-Use Parking Facility was one of my favorite projects. It was rewarding to assemble such a strong team, including the developer and the general contractor to augment our architectural partner, Sherman Carter Barnhart. This project is a great example of a successful Public-Private Partnership endeavor, one that was financial feasible. Like many of my favorite projects, it was an absolute pleasure to work with industry friends for such an outstanding project.”



MIKE
MARTINDILL
Vice President

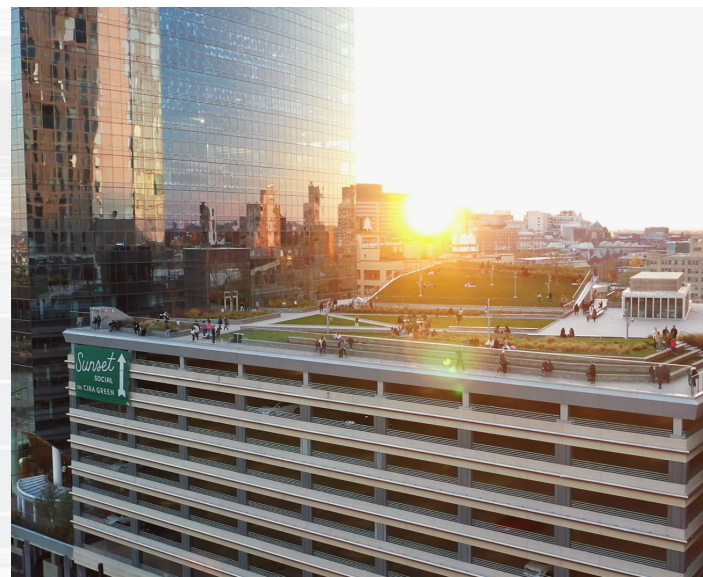
Augusta University
Parking Garage
Atlanta, GA



JEAN
CHOI
Human Resource
Manager

Cira South
Parking Structure
Philadelphia, PA

“The Cira Center Garage has made a lasting impression as many candidates, during interviews, often express their excitement that this project is their preferred spot to relax and take in the skyline views of the Philadelphia city. This project stands out as one of my personal favorites among garages due to its vibrant green roof feature.”



Q&A WITH THA



NAN CHEN,
MBA, AICP
Parking & Mobility
Planner

Bethlehem Walnut
Street Garage
Site Feasibility
Bethlehem, PA

“Assisting the Bethlehem Parking Authority with the Bethlehem Walnut Street Garage Site Feasibility Study has been a fulfilling experience. Evaluating the optimal size for a new parking garage to meet current and future downtown parking demands was rewarding. The technologically savvy Parking Authority drove my excitement to analyze the data and utilize my professional skills to right-size the garage.”



“The international project experience of BlueOne Waterpark Mixed-Use Parking Garage from start to finish, with a great dedicated team, was a true success. The architecture was well done and enjoyable for the project team as well as the many visitors of the waterpark. This project stands out as one of my first completed projects.”



LENA
JO
Project Designer

BlueOne Waterpark
Mixed-Use
Parking Garage
Gyeongju City, Korea



JAVIER
SANCHEZ, AIA
Director of
Operations

Miami Design District
Museum Garage
Miami, FL

“The Miami Design District Museum Garage exemplifies the unwavering dedication of the ownership team in materializing the facade designer's visions, turning them into a remarkable reality. Today, this mixed-use parking garage with its five beautifully decorated facades stands proudly as one of the most distinctive and noteworthy structures of its kind.”





FEATURED PROJECT

SEPTA WAWA STATION PARKING GARAGE

Media, PA

FEATURED PROJECT



SEPTA WAWA STATION PARKING GARAGE

Media, PA

For the Southeastern Pennsylvania Transportation Authority (SEPTA), THA Consulting Inc. (THA) provided parking planning, architectural, and structural design services for the Wawa Station Parking Garage located in Media, PA. This recently constructed parking structure offers parking for 580 vehicles and serves the SEPTA Wawa Regional Rail Station, providing convenient access for commuters. It also facilitates transfers between the train service and two bus routes.

The parking garage not only serves the local residents but also caters to the commercial destinations in the area. Adjacent to the station, just 2 minutes away, is the Wawa Corporate Headquarters. Additionally, the presence of nearby local hiking trails enhances the station's appeal as a welcoming hub for various modes of transportation, catering to the needs of both commuters and visitors.

The garage accommodates residential, visitor, and commercial vehicles, serving as a transit point for commuters traveling to the station. Its facade features an architectural form liner finish that not only enhances the garage's aesthetics but also complements the overall design of the station and its surroundings. Furthermore, the parking garage spans over Chester Creek, providing a vehicular pathway from the highway to the SEPTA Wawa Station.



RIBBON CUTTING CEREMONY

Septa Wawa Station Parking Garage

THA was thrilled to attend the SEPTA Wawa Station Ribbon Cutting ceremony. This event represented a significant milestone for SEPTA and its important role in transportation. THA was excited to be involved in a project that brought positive benefits to the community and improved the overall commuting experience.



**WAWA CORPORATE HQ
PARKING GARAGE**

Media, PA

For the Southeastern Pennsylvania Transportation Authority (SEPTA), THA partnered with prime architect JacobsWyper Architects and design-build contractor SNC-Lavalin, to design a multi-level, mixed-use parking structure for the Wawa Headquarters campus. THA provided structural engineering, functional design, and architectural design and documentation for the entire structure. THA also designed an overbuild for an additional tier on top of the garage, to accommodate Wawa's Innovation Design Center. This unique garage includes a 120 foot, long-span, precast superstructure design to support the anticipated live loads and dead loads for the parking garage. This was accomplished by combining architectural and standard finish precast spandrels, columns, wall panels and shear walls.



**PENN PRESBYTERIAN
MEDICAL CENTER
PARKING GARAGE**

Philadelphia, PA

THA provided prime design services for the Penn Presbyterian Medical Center. As the Architect and Engineer of Record, THA was responsible for designing and overseeing the construction of a new parking structure. This structure was designed to accommodate 1,500 vehicles and featured nine levels of precast construction. In addition, the parking structure included two fully glazed stairs and elevator towers, providing convenient access to the various levels of the structure. As the prime design services provider, THA was instrumental in ensuring that the parking structure met the needs of the medical center and its visitors, providing a safe and efficient parking solution for all.



**GEORGIA TECH DALNEY STREET
PARKING GARAGE**

Atlanta, GA

THA provided parking consulting services for the 600-space parking deck at Dalney Street, Georgia Institute of Technology (Georgia Tech). This parking deck includes features such as charging stations, dedicated bike parking, and designated parking spaces for golf carts. The precast garage incorporates numerous sustainability design features, as it serves the new Black Water Education building at Georgia Tech.

**HINCHLIFFE STADIUM
PARKING GARAGE**

Paterson, NJ

THA worked with RPM Development Group to design and construct the 315-space garage that will serve the fans of the historic Hinchliffe Stadium and adjacent residential senior living apartments. THA served as engineer and architect of record while providing structural engineering, functional design and layout, along with architectural design and documentation for the entire structure. The garage design includes a structural precast superstructure with architecturally detailed spandrels, wall panels, and exterior shearwalls that pay tribute to the iconic details and features of Hinchliffe Stadium. A main stair and elevator tower along with a punch through stair will provide vertical circulation for the users of the garage.



AWARDS

**AWARD OF EXCELLENCE
ARCHITECTURAL DESIGN**
International Parking & Mobility Institute

**GREEN STREET
MIXED-USE GARAGE**
Newark, NJ



**AWARD OF MERIT
MIXED-USE PARKING &
MOBILITY FACILITY DESIGN**
International Parking & Mobility Institute

**FORT LEE GUNTZER STREET
PARKING GARAGE**
Fort Lee, NJ

**AWARD OF EXCELLENCE
MIXED-USE PARKING &
MOBILITY FACILITY DESIGN**
International Parking & Mobility Institute

**UNIVERSITY OF KENTUCKY
CORNERSTONE MIXED-USE FACILITY**
Lexington, KY



ARCHITECTURAL EXCELLENCE
International Parking & Mobility Institute

AWARD OF EXCELLENCE
International Parking & Mobility Institute

**MIAMI DESIGN DISTRICT
MUSEUM GARAGE**
Miami, FL

PUBLICATIONS

A GUIDE TO PARKING
Functional Design
Todd Helmer, PE, SE & Michael App

**HANDBOOK ON PUBLIC PRIVATE PARTNERSHIPS
IN TRANSPORTATION, VOL II**
Michael Martindill

**SUSTAINABLE PARKING DESIGN & MANAGEMENT:
A PRACTITIONER'S HANDBOOK**
Parking Strategies for Smart Growth and Transit Oriented Development
Jim Zullo, AICP, LEED AP, CAPP

PARKING & MOBILITY MAGAZINE ARTICLES
PARKING SPOTLIGHT: GREEN STREET PARKING GARAGE
Todd Helmer, PE, SE



SPEAKING ENGAGEMENTS

TODD HELMER, PE, SE
CEO

JIM ZULLO, AICP, LEED AP, CAPP
President

JUNE 13TH, 2023

BEST PRACTICES & TRENDS:
DESIGN OPPORTUNITIES FOR
PARKING STRUCTURES, OLD & NEW!

Parking facilities are often a gateway to any destination, therefore may positively contribute to enhance the experience to a downtown district, healthcare or higher education campus, entertainment venue, and other destinations. In addition, a quality design can have significant beneficial impact on the aesthetics and vibrancy of the area it serves.

This presentation will highlight essential planning and design elements to enhance the aesthetic appeal, and user comforts of both old and newer parking structures. The design strategies outlined in the presentation offer opportunities for new structures as well as upgrades to existing structures to feel safer, more inviting, vibrant, and contribute to the overall user experience. Design components include, façade enhancements, pedestrian connectivity, passive and active security upgrades, graphics, lighting, screening, placemaking, and enhanced signage.

THA IS MOVING!

SOCIAL MEDIA



THA IS MOVING!

As of July 2023, THA Consulting, Inc. will be relocating to a new office!

YOUTUBE

CHECK OUT OUR
THA TIPS:



PARKING GARAGE CONDITION APPRAISAL



PARKING GARAGE SPRING CLEANING

LINKEDIN

SUBSCRIBE TO
OUR EMAIL:



OUR NEW ADDRESS:

470 NORRISTOWN ROAD, SUITE 200
BLUE BELL, PA 19422

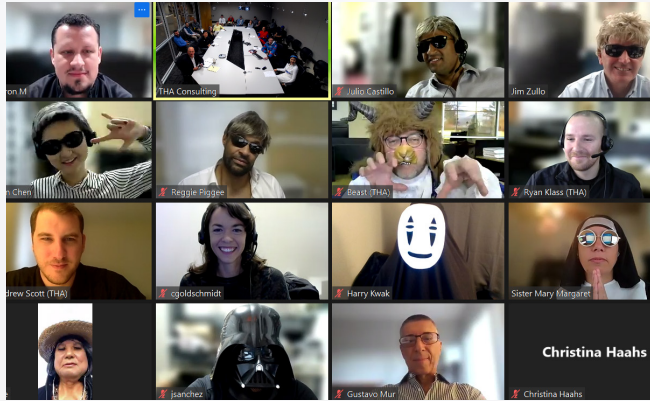


BROCHURE RESOURCES For more information on our services email us at info@tha-consulting.com

RESTORATION	PARKING STUDIES	MIXED-USE	GOVERNMENT	TRANSIT & TOD	HEALTHCARE	EDUCATION

HALLOWEEN

All was well and content in the THA offices until the ghouls and ghosts of construction's past emerged to play. The Blue Bell, PA & New Brunswick, NJ offices startled and amazed everyone with their annual Halloween costume contest. There was a gentle beast, a shopping lady with a hidden secret, and several other costumes that brought smiles and laughter throughout the day. The other regional offices enthusiastically embraced the challenge and delivered fun and magic for this bewitching occasion, leaving no room for disappointment.



THA SOCIAL OUTING

NEED FOR SPEED!
THA hosted a social event with our Philadelphia and New Brunswick staff at Speed Raceway.

Congrats to Daniel Klapper on winning THA's first-place speed racer! Looking forward to many more races!



ELIJAH'S PROMISE

Early this year, THA sponsored nutritious meals for Elijah's Promise. Thank you to our THA New Brunswick staff and friends at Elijah's Promise for a successful day serving the local community! THA continues to support Elijah Promise as they work to support those less fortunate in the community.



GO RED FOR WOMEN



The Blue Bell, PA office joins together, exhibiting a touch of red in their wardrobe, to raise awareness for women's heart health. Recognizing that heart disease is one of the leading causes of death for women, this action serves to promote life-saving measures. This movement harnesses the energy, passion, and power of women, uniting them in a collective effort to eradicate heart disease.



MARCH OF DIMES

March of Dimes (MOD) is a charitable organization dedicated to funding research and providing resources for families dealing with the challenges of premature birth. Their mission is to promote the well-being of both mothers and babies, ensuring they have access to the necessary support and care. THA, as a long-time supporter of MOD, recognizes the importance of their work and actively participates in their efforts to promote healthy moms and strong babies.

AHA ANNUAL HEART BALL



The American Heart Association (AHA) Heart Ball event is a celebration of the ongoing advancements in research and science aimed at improving health. This year, the event placed special emphasis on the importance of learning CPR. THA actively supports and promotes awareness of initiatives that enhance the quality of life for individuals every day, particularly when it comes to heart health. By championing these causes, THA strives to make a positive impact on the well-being of people and their cardiovascular health.





info@THA-Consulting.com
www.THA-Consulting.com

PHILADELPHIA
NEW BRUNSWICK
ATLANTA
MIAMI